

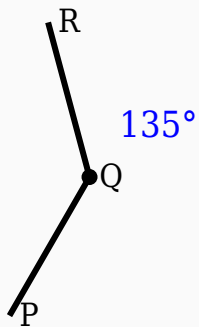
135° Angle Worksheet - Solved

Question 1

135° is smaller than 90°.

Question 2

Identify the vertex in the given figure.



Question 3

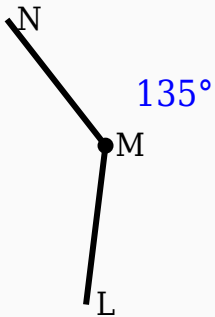
135° is a obtuse angle.

Question 4

135° + _____° = 180°.

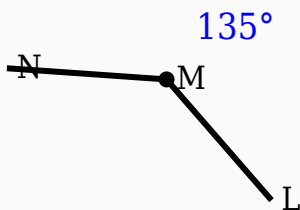
Question 5

Construct the shown angle using ruler and compass.



Question 6

Construct the shown angle using ruler and compass.



Question 7

Which angle is supplementary to 135° ?

- A. 60°
- B. 45°

- C. 45°
- D. 90°

Question 8

Which type of angle is 135° ?

- A. Acute
- B. Obtuse
- C. Reflex
- D. Right

Question 9

135° is an _____ angle.

Question 10

Which instrument is mainly used to draw arcs?

- A. Scale
- B. Compass
- C. Divider
- D. Eraser

Answer Key

Question	Answer
1	False
2	Middle labeled point
3	True

4	45
5	135° constructed
6	135° constructed
7	45°
8	Obtuse
9	obtuse
10	Compass